

Sterilight®

Lamp and Sleeve Replacement S80, SM80, SV50



Always shut-off water flow and release water pressure before servicing.



Electrical hazard. Be sure to unplug power supply. Keep all electrical connections dry and off the ground. Do not touch plug with wet hands.



Never look directly at the lamp when it is operating.



Read directions before servicing.

About sleeve cleaning:

Minerals in the water slowly form a coating on the sleeve. This coating must be removed because it reduces the amount of UV light reaching the water, thereby reducing disinfection performance.

About lamp replacement:

The amount of UV light created by the lamp decreases over time, requiring that the lamp be replaced. The system will automatically notify you when it is time to replace the lamp (the lamp should last approximately 24 months).

Equipment required:



#2 Phillips screw driver



Clean cotton, latex or plastic gloves are preferred.



Scale remover such as vinegar or a citrus-based product.



Cloth must be soft, lint-free, and chemical-free. No clean-wipes.



Cotton swab.

Part	Lamp	Sleeve	Length
Sterilight SV50, SM80, S80	S37RL-AM	QS-37	36.5"

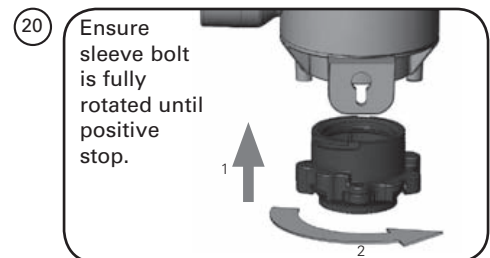
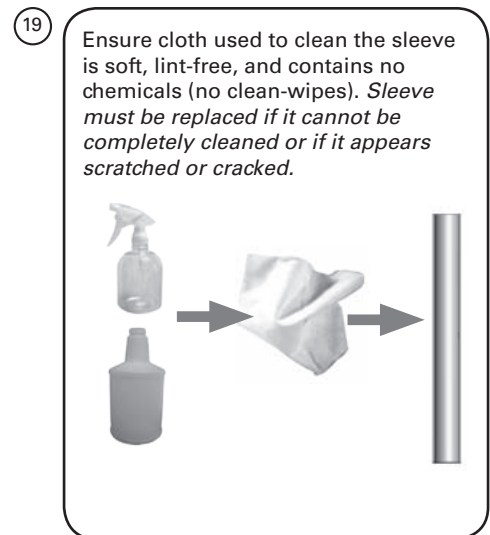
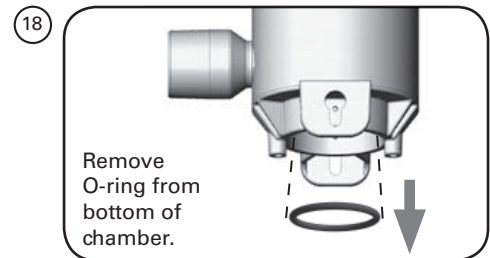
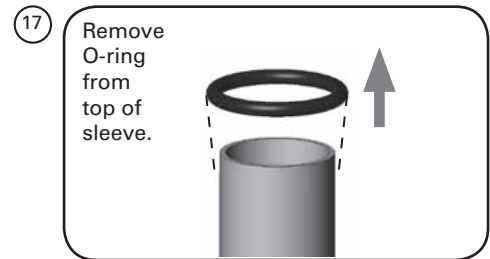
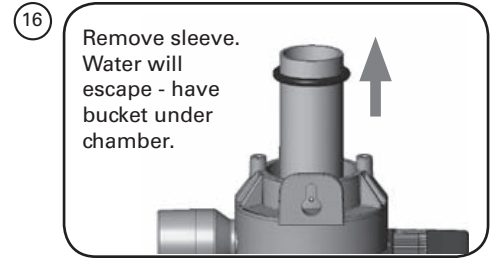
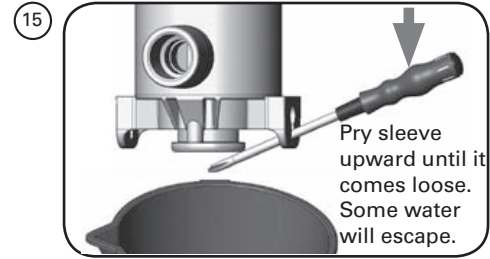
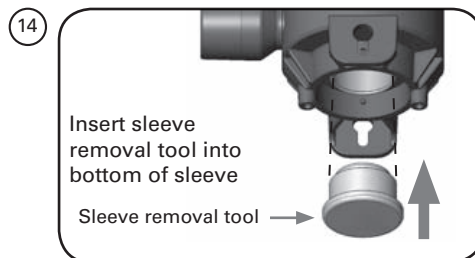
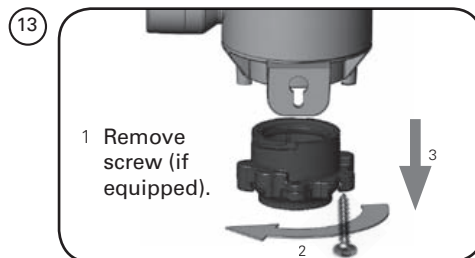
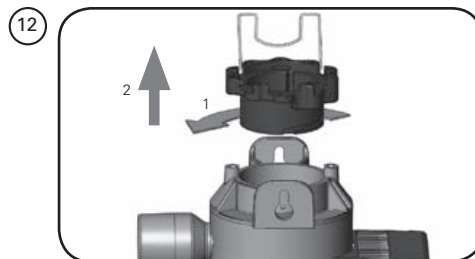
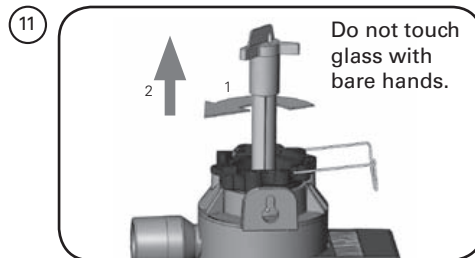
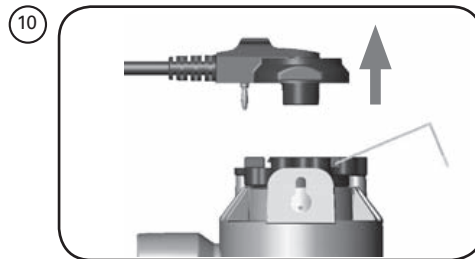
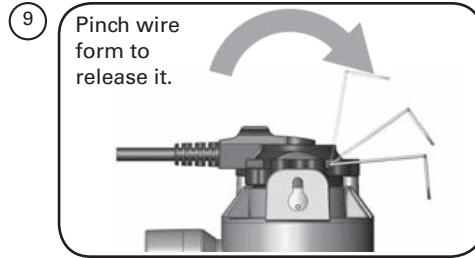
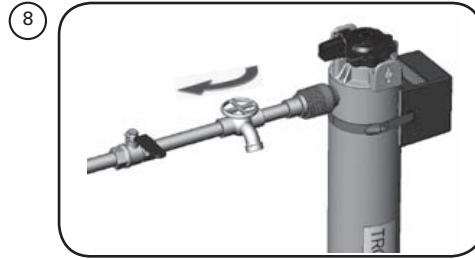
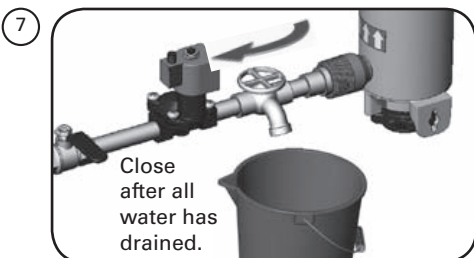
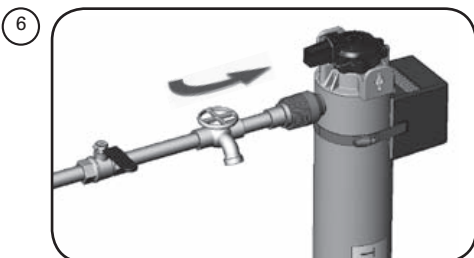
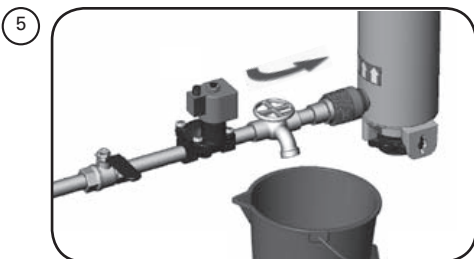
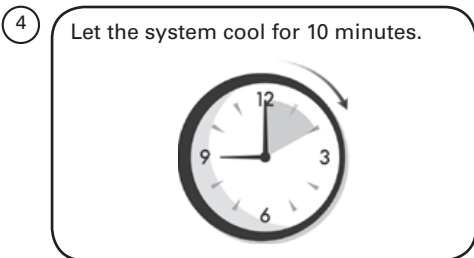
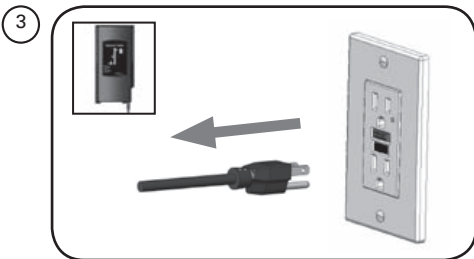
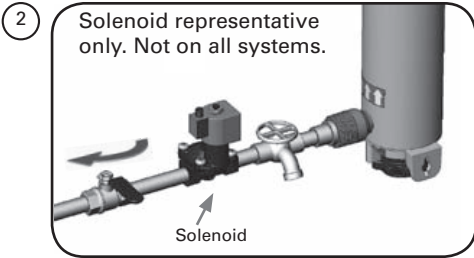
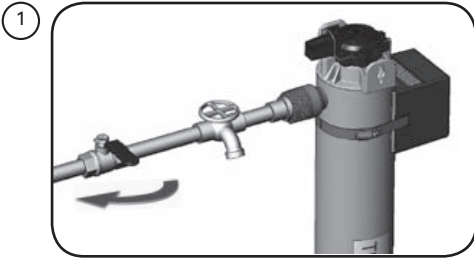
Powered by

VIQUA™

425 Clair Rd. W, Guelph, Ontario, Canada N1L 1R1 • info@viqua.com
t. 1.519.763.1032 • tf. 1.800.265.7246 (US/CAN) • t. +31 73 623 8116 (EUR) • f. 1.519.763.5069

A TROJAN TECHNOLOGIES COMPANY © 2011 VIQUA - a Trojan Technologies Company

520149-R RevC



21

Do not touch glass with bare hands. Insert curved end of sleeve first. Do not rotate sleeve.

28

Skip to Step 31 if not equipped with a sensor.

35

22

Wet O-ring with water then place over top end of sleeve.

29

36

If lamp was replaced: Press and hold "New Lamp" button for 5 seconds until you hear a "beep".

23

Ensure sleeve bolt is fully rotated until positive stop.

30

37

Disinfect the water lines. UV systems disinfect the water using ultraviolet light, treating the water as it passes through the system. When there is a risk that water downstream of the UV system has been contaminated it is critical that these water lines be chemically disinfected.

24

31

38

25

Wet O-ring with water then place over bottom end of sleeve.

32

Lock wire form into position.

39

26

Ensure sleeve bolt is fully rotated until positive stop. Install screw (if equipped).

33

40

27

Re-install current lamp if it does not need replacement. Be sure to rotate lamp completely. Do not touch glass with bare hands.

34

Unplug sensor from blue jack.

41

